

# ACEs Community of Practice

June 28, 2023 | 12:00 PM - 1:00 PM



12:00 PM	<b>Welcome &amp; Introductions</b>	<i>Priscila Bacio, HIP</i>
12:10 PM	<b>Enhanced Care Management &amp; Community Supports for the Pediatric Population of Focus</b>	<i>Trudy Bearden, HIP Consultant</i>
12:25 PM	<b>Centering Wellness: The Role of Schools in Addressing Behavioral Health</b>	<i>Lauren Fein, Director of Behavioral Health, Santa Cruz County Office of Education</i>
12:40 PM	<b>Group Discussion and Q&amp;A</b>	<i>Allison Guevara, Consultant, HIP</i>
1:00 PM	<b>Next Steps &amp; Wrap-Up</b>	<i>Laura Wishart, HIP</i>

[Acceda aquí a la grabación de la reunión](#)

(Elija su idioma de preferencia haciendo clic en el ícono del globo)

[Access meeting recording here.](#)

(Choose your language preference by clicking on the globe icon)

# May 2023 CoP Meeting - Jamboard Session

What will it really take to cut ACEs in half in one generation, and what can we do as a community?

Taking ownership for each other's wellbeing - no more them and us, creating a WE mentality.

Address Adverse Community Environments in the Pair of ACEs Model - evaluate and assess which one we can tackle first

ACES education for parents starting at birth (homebirth midwives to hospital settings) and integrated into parenting classes supported by schools.

Harmonize ACES screen with other Assessment of Needs

policies that support families to meet basic needs of childcare, food, health care, preschools, paid family leave, etc (probably beyond scope of this group!)

Increase behavioral health capacity in county

Expanding education

Improve linkage/coordination amongst service providers

Community Events highlighting stress busters activities.

Continue to address the social determinants such as housing and employment

Youth resources - safe environment for youth to ask for help, and safe space to hang out with friends.

increase parent engagement in treatment/empower parents

What would you like to learn and work together on at future meetings?

Expert guest speakers

Who from our community should be at these meetings and how do we get them here?

Harmonize ACES screen with other Assessments of Needs

ACES Outreach to communities and CBOs education/presentation on how to do it.

Invite other communities with ACES Aware initiatives to learn from their work, lessons learned, challenges.

other partners who are indirectly involved in supporting folks with ACEs or toxic stress

ACES training/education for the community members and information on stress busters.

System issues that we all intersect with - how can we use a collective impact approach to strategize actions to help reduce ACEs

remove the barrier caused by the differentiation of health and human services

How do we position ACES in a Whole Person Care paradigm?

more education on the social drivers of culture as well as the social drivers of trust

# SANTA CRUZ COUNTY PATH COLLABORATIVE

**Collaborative Planning & Implementation (CPI) Initiative**

---

Enhanced Care Management & Community Supports  
for the Pediatric Population of Focus



# Enhanced Care Management (ECM) Populations of Focus

**Santa Cruz County (as of June 28, 2023)**

1. **Individuals and families experiencing homelessness**
2. **Individuals at risk for avoidable hospital or emergency department (ED) utilization**
3. **Individuals with serious mental health and/or substance use disorder (SUD) needs<sup>1</sup>**
4. **Individuals transitioning from incarceration**
5. Adults living in the community and at risk for long-term care institutionalization
6. Nursing facility residents transitioning to the community
7. **Individuals with intellectual or developmental disabilities (I/DD)**
8. **Pregnant and postpartum individuals**
9. ***Children and youth involved in child welfare (July 1, 2023)***
10. ***Children/youth enrolled in California Children's Service (CCS) or CCS Whole Child Model (WCM) with additional needs beyond the CCS condition (July 1, 2023)<sup>2</sup>***
11. ***Birth equity (January 1, 2024)***

1. "For children and youth, a number of social conditions and risk factors (e.g., exposure to trauma or other adverse childhood experiences (ACEs)) often present as behavioral health needs." [ECM Policy Guide](#). DHCS.
2. Eligibility criteria include experiencing at least one complex social factor influencing their health, which includes ACE score of 4 or higher.

**Child or youth is defined as an individual under 21 years of age.**

# Community Supports Services

## Santa Cruz County (as of June 23, 2023)

1. Housing transition navigation services (e.g., assistance applying for and finding housing, signing a lease, securing resources for setup, utilities, moving in)
2. Housing deposits
3. Housing tenancy and sustaining services (e.g., early intervention around behaviors that might jeopardize housing, dispute resolution with landlords and neighbors, recertification support)
4. Short-term post-hospitalization housing
5. Recuperative care (medical respite)
6. Respite services (for caregivers such as those caring for people with dementia or children with disabilities who need short-term relief) (July 1, 2023)
7. Personal care and homemaker services
8. Environmental accessibility adaptations (home modifications)
9. Medically-supportive food/meals/medically tailored meals
10. Asthma remediation
11. *Day habilitation programs (e.g., training on independent living skills like cooking, cleaning, and shopping) (recommendation to launch after DHCS transitions CS to Medi-Cal benefit)*
12. *Nursing facility transition/diversion to assisted living facilities, such as Residential Care Facilities for the Elderly (RCFE) and Adult Residential Facilities (ARF) (end of 2025)*
13. *Community transition services/nursing facility transition to a home (end of 2025)*
14. *Sobering centers (TBD)*

# Resource Roundup (1 of 2)

- [CalAIM Enhanced Care Management Policy Guide](#). DHCS. (104 pages)  
[Medi-Cal Community Supports, or In Lieu of Services \(ILOS\), Policy Guide](#). DHCS. (83 pages)
- PATH [TA Marketplace](#) (website)
  - [PATH TA Marketplace Guidance](#). (11 pages)
- [California Advancing and Innovating Medi-Cal \(CalAIM\) Providing Access and Transforming Health \(PATH\)](#). DHCS. (2-pager)
- [PATH Support for Implementation of ECM and Community Supports Guidance: Collaborative Planning and Implementation Initiative](#). DHCS (9 pages)

# Resource Roundup (2 of 2)

- [Alliance directory of all ECM and Community Supports providers in Santa Cruz County.](#) (website)
- [Alliance Enhanced Care Management \(ECM\) and Community Supports](#) (website for potential or existing providers of these services)
  - If your organization is interested in becoming an ECM or Community Supports provider, please email the Alliance at [ecmilosprogram@ccah-alliance.org](mailto:ecmilosprogram@ccah-alliance.org)
  - To attend invites to the ECM and Community Supports Office Hours: email Jessica Hampton at [jhampton@ccah-alliance.org](mailto:jhampton@ccah-alliance.org)
- [CalAIM Resources for CBOs.](#) California Health Care Foundation. (website)



# THANK YOU!



NEXT PATH COLLABORATIVE MEETING:  
Thursday, July 27, 8:30 - 10:00 AM

To be added to the PATH Collaborative meetings, email Maria Jerezano at [mjerezano@hipsc.org](mailto:mjerezano@hipsc.org).



# Centering Wellness

## The Role of Schools in Addressing Behavioral Health



**DR. FARIS SABBAAH**  
SUPERINTENDENT OF SCHOOLS

**Lauren Fein**  
Pronouns: she/her/hers  
LMFT, Director of Behavioral  
Health

# School District Initiatives

Each District's LCAP has identified Wellness and Social Emotional Support as a priority area

## **Some examples are:**

- Providing professional learning for staff around SEL, Restorative Practices, Trauma Responsive Practices
- Implementing Social Emotional Learning Curriculum
- Hiring Mental Health Clinicians
- District Level Wellness Centers
- Youth-Led Mental Health Support Groups



# School as a Hub



# Where are the Gaps?



**Decentralized  
Service  
Delivery**

**Limited Access  
Insurance, location**

**Organizational Silos**

**Staff Burnout  
Limited pool of  
Clinicians**

**Complex and  
inconsistent  
funding sources**

# Ongoing Effort

## Staff Training

- Youth Mental Health First Aid
- Trauma/Resiliency Training

## Training for Students

- Teen Mental Health First Aid
- Peer Support (Hope Squad)

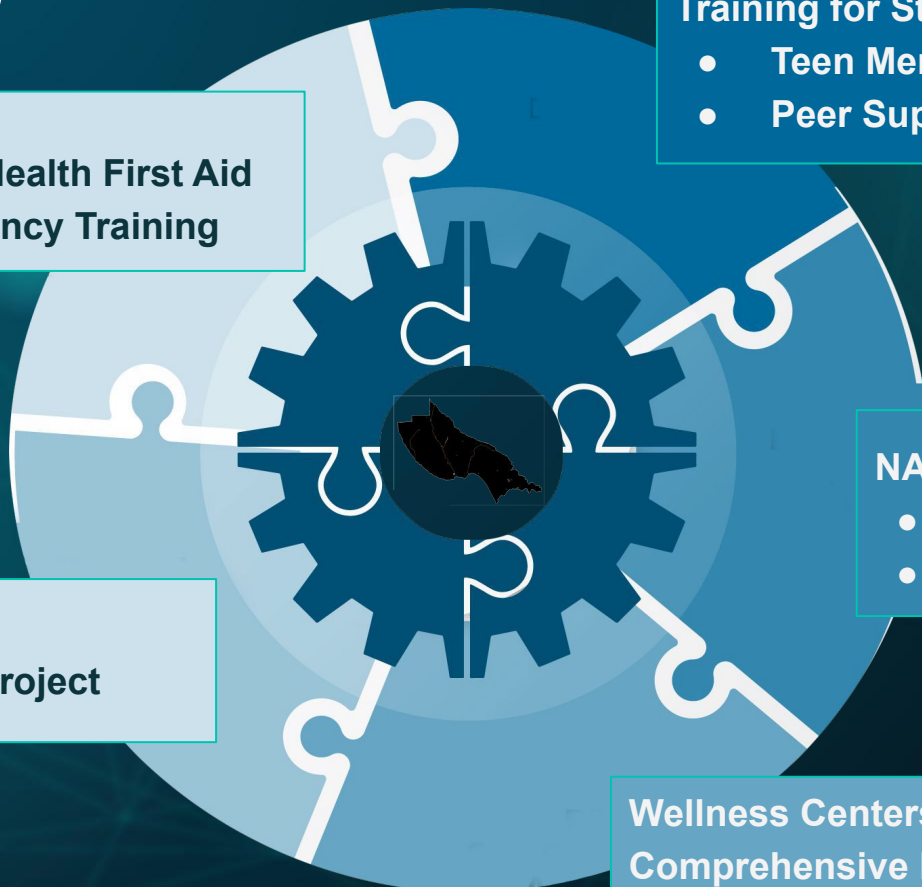
## NAMI Training for Parents

- Ending the Silence
- NAMI Basics

## Case Management

- The Companion Project

Wellness Centers at all  
Comprehensive High Schools



# COE Initiatives - The Companion Project (TCP)

- **Who We Serve:** Vulnerable youth with higher Behavioral Health acuity
- **What We Do:** Navigation focus with flexibility for direct services, and Professional Development, group work, SERP response, transition planning, and more
- **Status:** Over 200 referrals in first year



# COE Initiatives - Wellness Centers

- **The Purpose:** Wellness Centers within school districts that will offer universal, coordinated, and timely mental health-related services to all students through an easily accessible location on a school campus.
- **Goal:** Two school-based pilot wellness centers open by Spring 23-24 School Year
- **Long-Term Goal:** Every District High School & Middle School - County Wide
  - **Long term Funding & Sustainability:** Partner with each District to develop, create, and implement a sustainability plan that braids funding to sustain the Wellness Center.



# Multi-Tiered Systems of Support

## Tier 3

- Individual and Group Therapeutic Services
- Restorative Justice Circles
- Crisis Response and Support
- Enhanced Care Management
- Referrals to Community Partner Services and/or The Companion Project

## Tier 2

- Group counseling / social-emotional groups
- Tier 2 Behavioral Interventions
- Restorative Mediations / Conflict Resolutions (IIRP Model)
- Individual Solution-Focused Brief Counseling/Motivational Interviewing

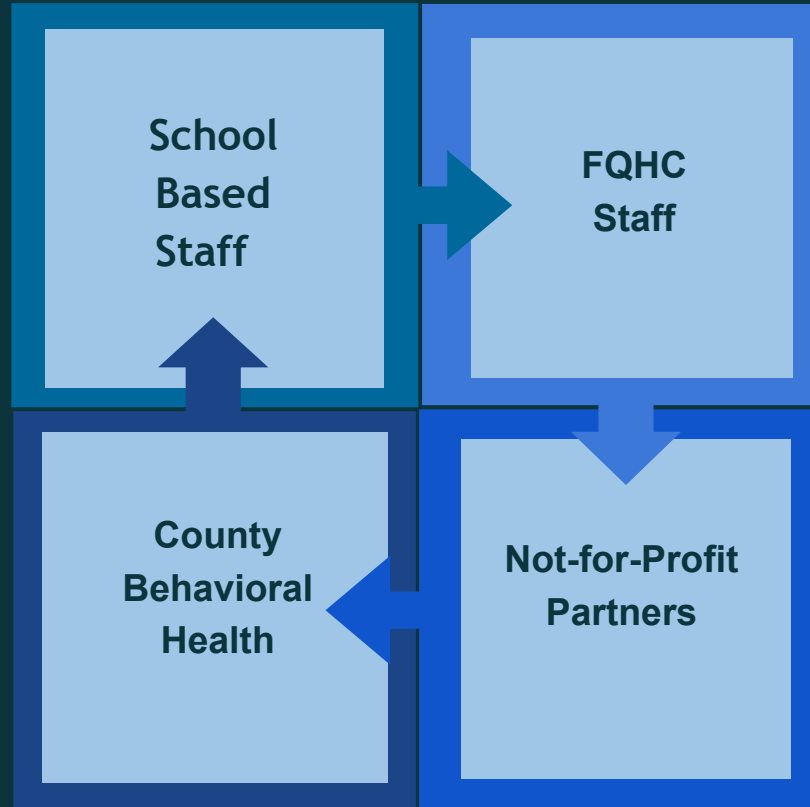
## Tier 1

- Trauma-Informed, Restorative, and Holistic School Culture and Climate
- Social-Emotional Learning and Mental Health Awareness Campaigns
- Drop-in Access to Wellness Center and Use of Calming Corner
- Staff, Student, Family, and Community Wellness Workshops
- Suicide Prevention
- Restorative Conversations





# Delivering Services



# Expected Outcomes

- Stigma Reduction of Mental Health Care
- Open Door to Wellness and Connection to Services
- Integrated systems of support that address the social determinants of health
- Prevention and Early Intervention
- Social and Emotional Skill Building



# Moving Forward

Adapt to Changing Landscape  
Commercial Insurance, CalAIM

A

Continued Investment  
in Behavioral Health  
On-Site Delivery

B

Developing Workforce  
Pipeline

C

Breaking Down  
Organization Silos

D



# ACEs and COE

- Opportunities:
  - Centering Wellness Initiative
  - Billing & Documentation
- Challenges:
  - Historically not sure what to do with data





**SANTA CRUZ**  
COUNTY OFFICE OF  
**EDUCATION**  
DR. FARIS SABBAGH • SUPERINTENDENT OF SCHOOLS



**Lauren Fein, LMFT**

she/her/hers

Director of Behavioral Health | Student Support Services

[lfein@santacruzcoe.org](mailto:lfein@santacruzcoe.org)

# Group Discussion and Q&A

---



# Next Steps & Wrap-up

- Our next meeting on July 26
- Meeting recordings, slides, and other materials will be sent out in follow-up email and linked on HIP's website.
- Please complete [meeting evaluation](#)!
- Feel free to invite others!





# THANK YOU!

NEXT CoP MEETING: Wednesday, July 26, 12-1 PM