

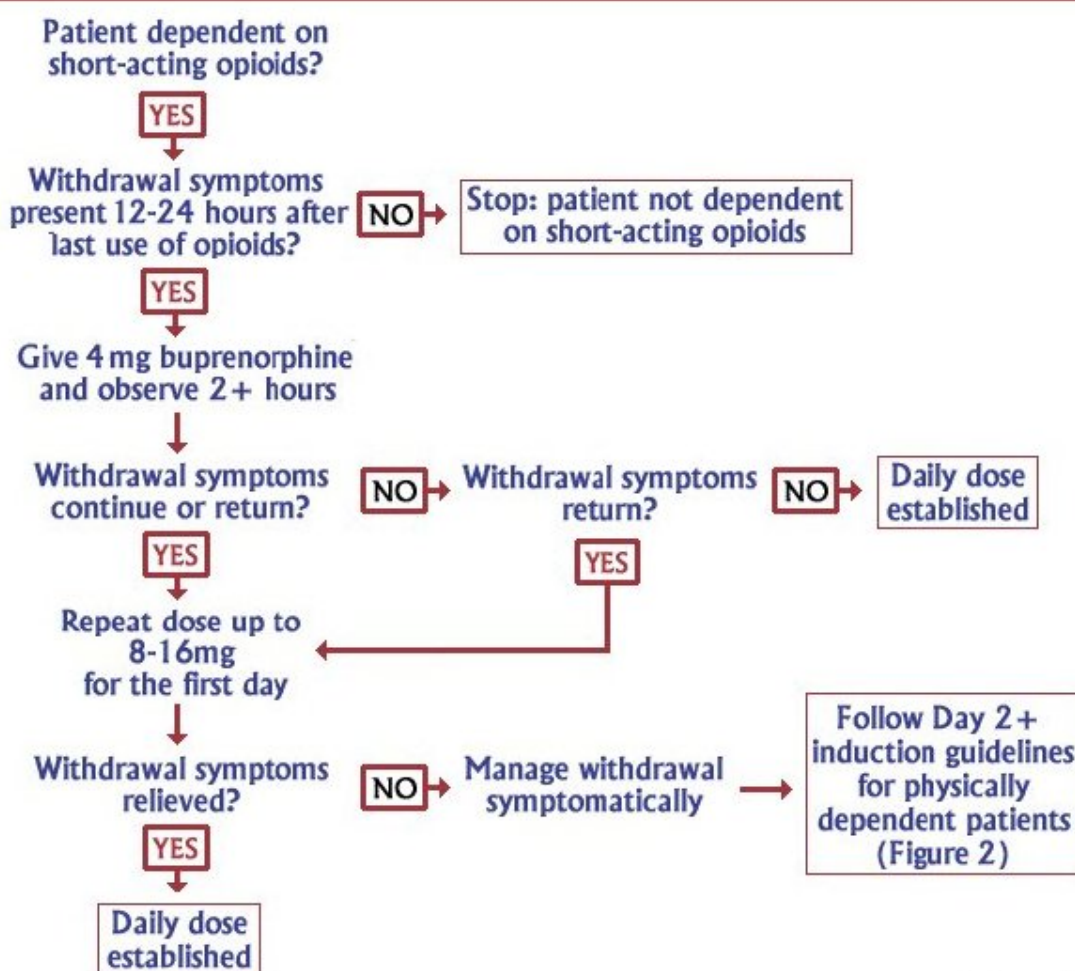
Buprenorphine Dosing Algorithms [1]

Description: A series of flow charts displaying the steps that should be followed when inducing a new patient into buprenorphine treatment.

Flow charts are included for patients addicted to short- and long-acting opioids, for non-physically dependent patients, and for patients switching from buprenorphine to buprenorphine/naloxone.

Day 1: Induction for Patients Physically Dependent on Short-Acting Opioids (e.g., Heroin)

FIGURE 1

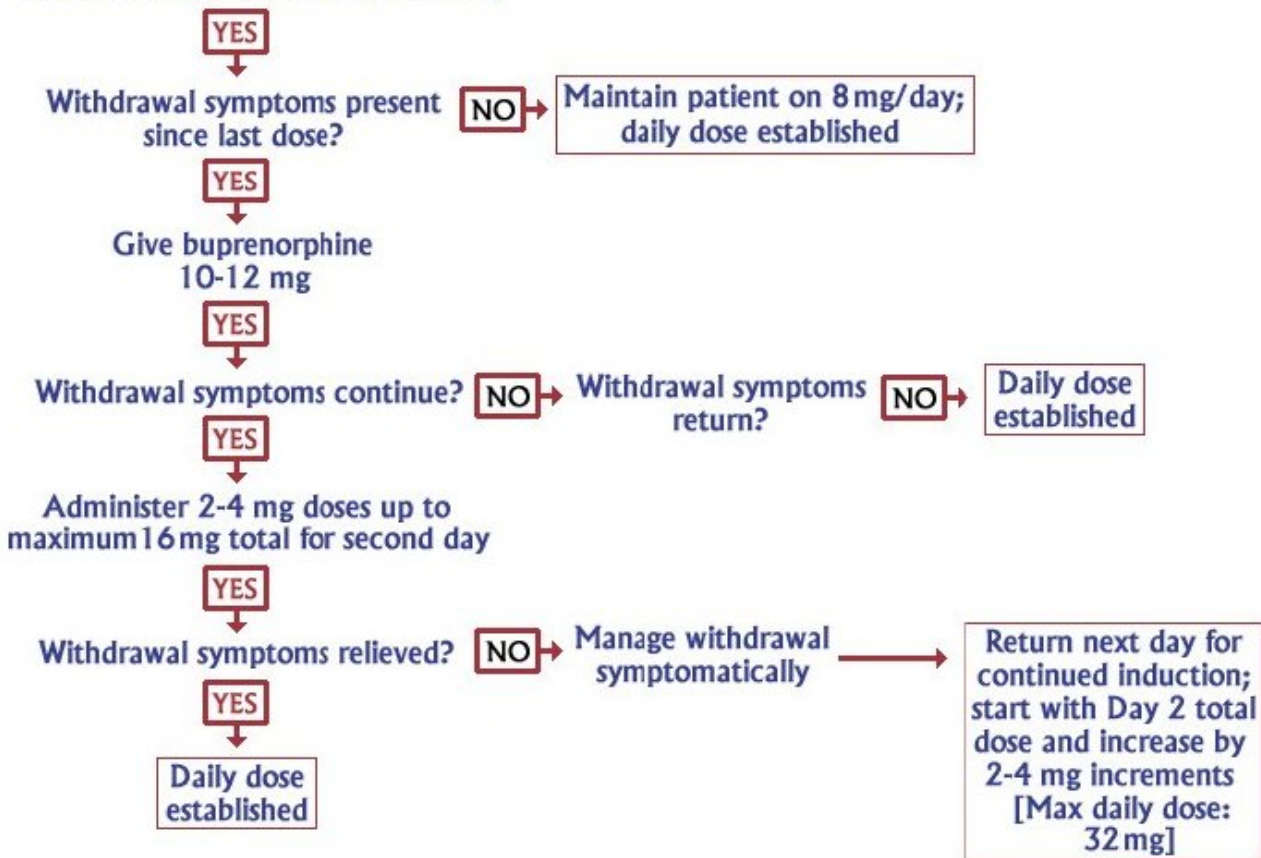


Copyright: Clinical Tools

Days 2 + : Buprenorphine Induction for Patients Physically Dependent on Short- or Long-Acting Opioids

FIGURE 2

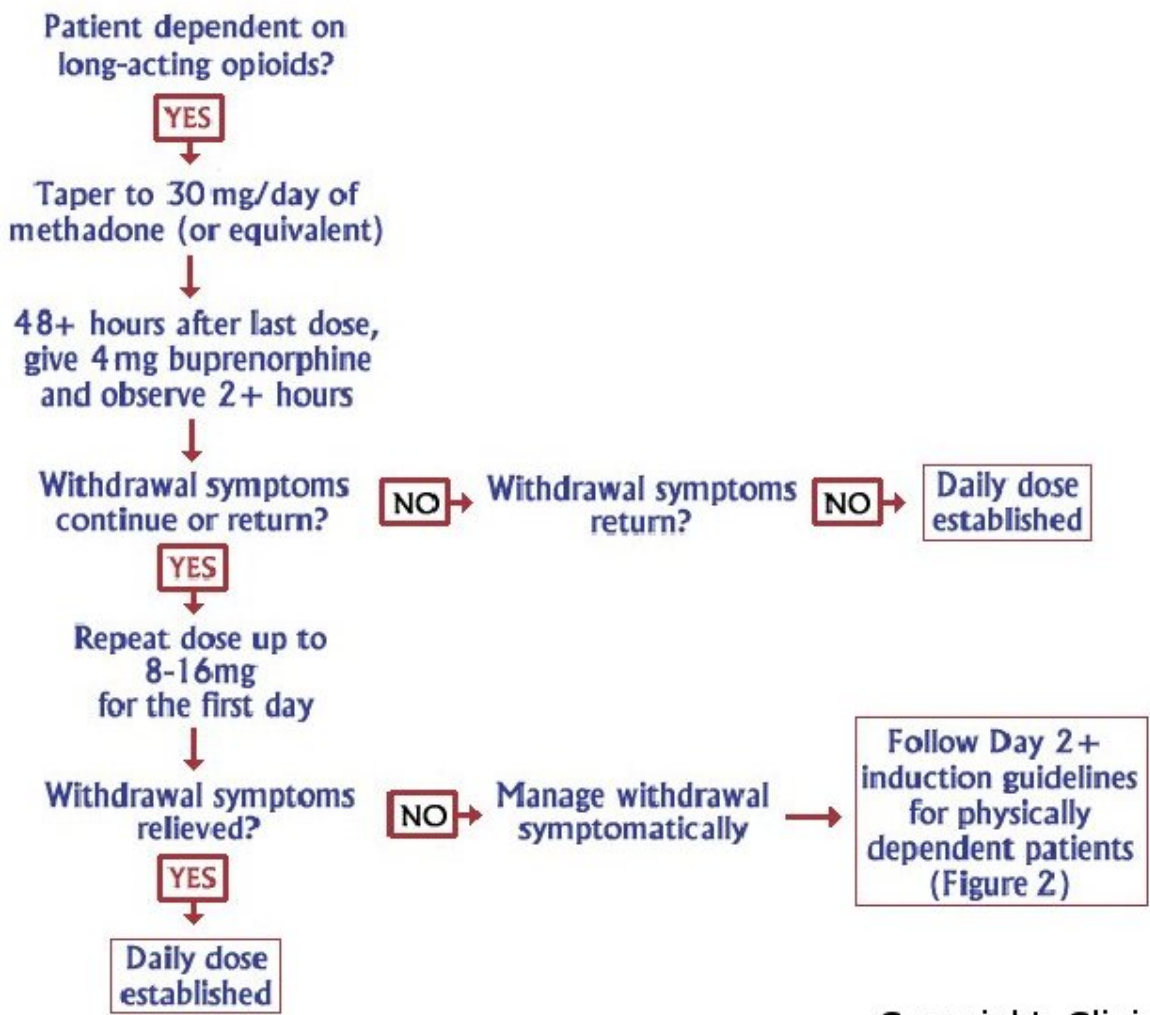
Patient returns to the office on 8 mg



Copyright: Clinical Tools

Day 1: Induction for Patients Physically Dependent on Long-Acting Opioids (e.g., Methadone)

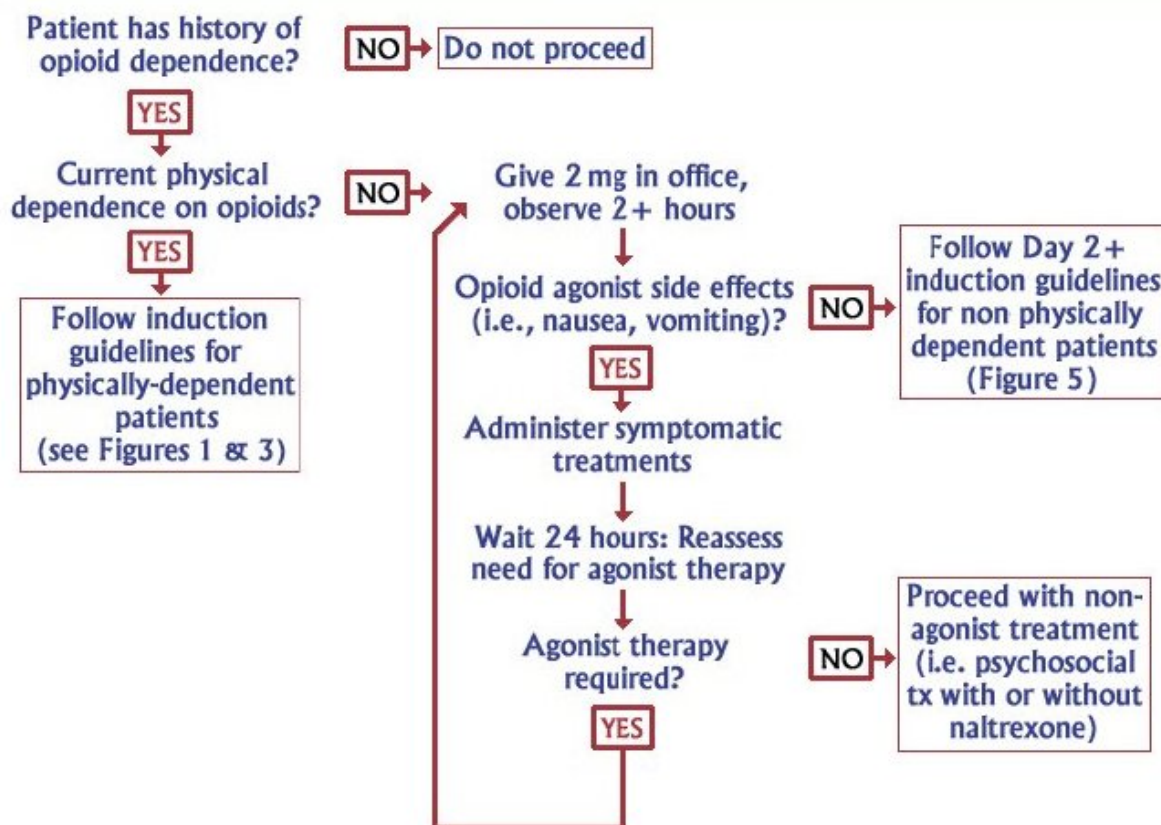
FIGURE 3



Copyright: Clinical Tools

Day 1: Induction for Nonphysically Dependent Patients

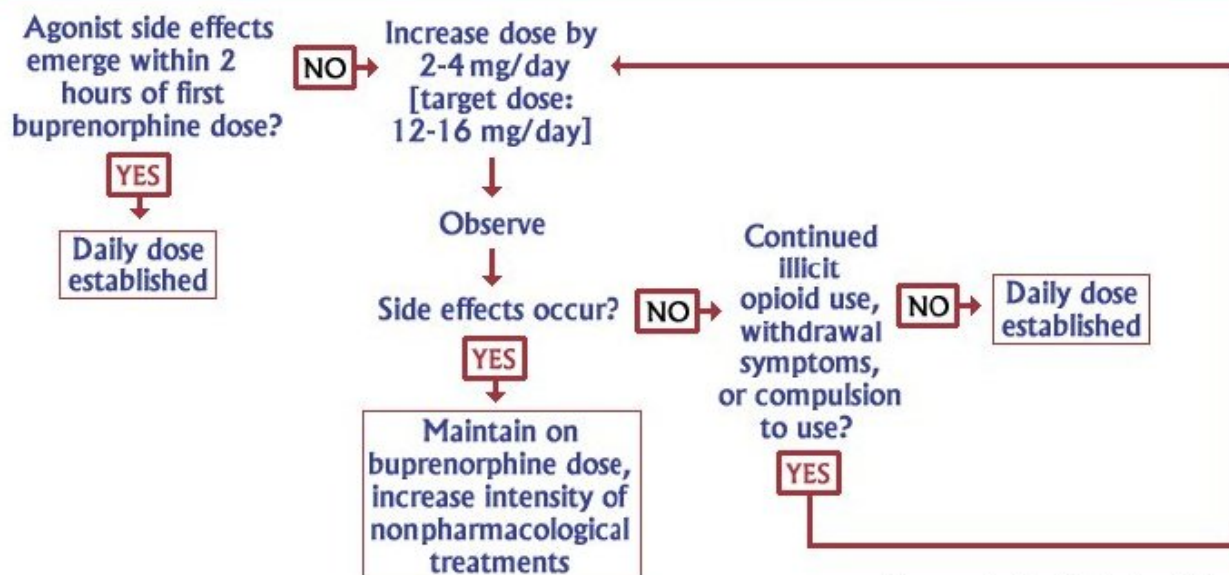
FIGURE 4



Copyright: Clinical Tools

Day 2+: Induction for Non Physically Dependent Patients

FIGURE 5



Copyright: Clinical Tools

Switch From Buprenorphine to Buprenorphine/Naloxone

FIGURE 6

Patient on buprenorphine monotherapy
(up to 32 mg/day)



Copyright: Clinical Tools

Links:

[1] <https://www.buppractice.com/node/2623>