



Risa, Angie, Nina, Eddie, Rose Marie,
Sharon (not pictured)

Emeline Clinic – Team Pneumovax
SNCC PCMH Initiative
November 18, 2011

Emeline Clinic – Team Pneumovax

Our team AIM is...

to reduce inpatient hospitalizations due to pneumonia for patients with a history of high-risk chronic diseases.



Progress toward achieving our aim is measured by....

an increase in the percentage of this population who have had a documented pneumococcal vaccination (pneumovax).

Our story...

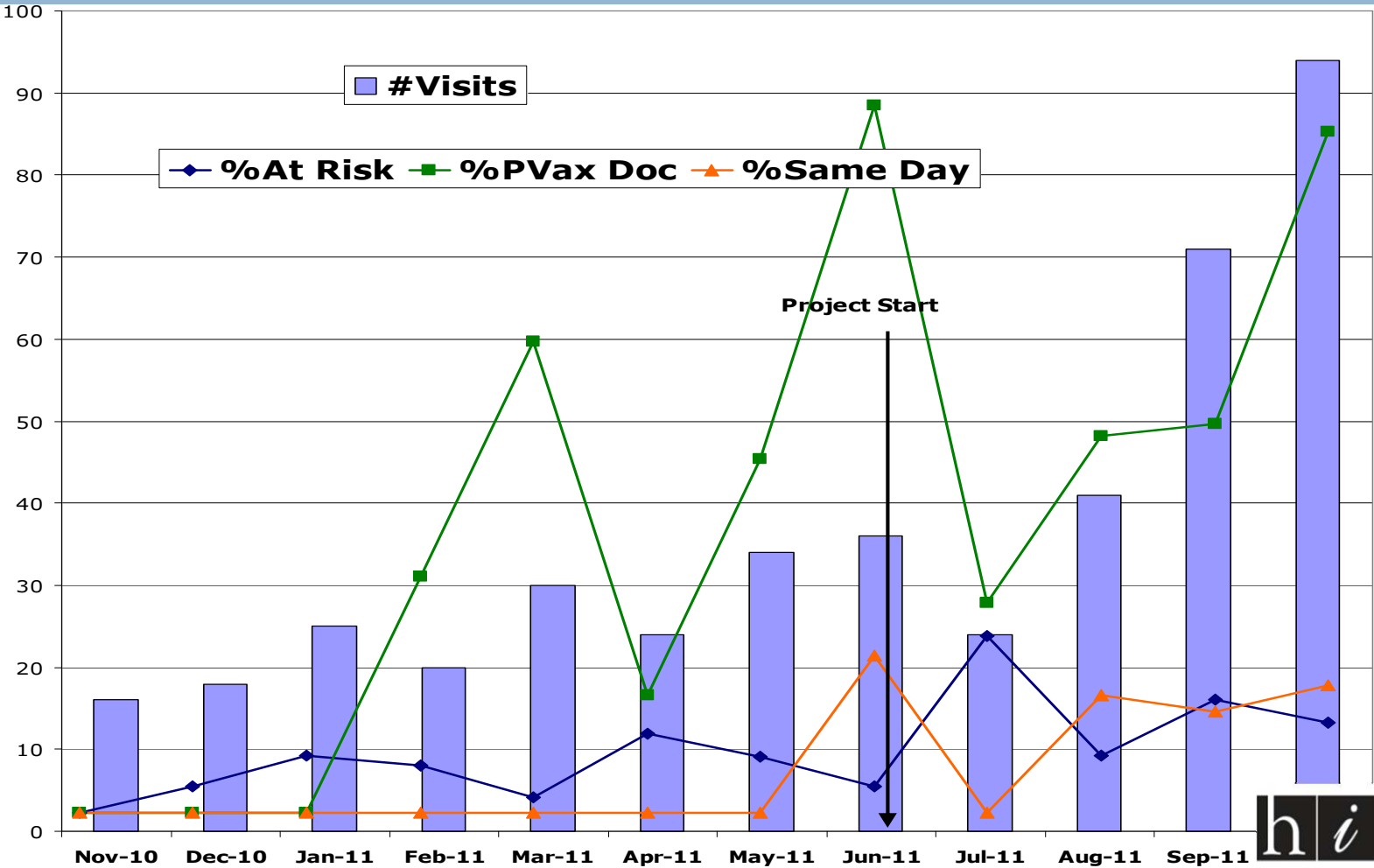
Our team:

- *Based on data reports from the Alliance, we knew this was an area for improvement for our clinic.*
- *Our team consists of a pilot physician and MA plus support from our Medical Director, Nursing Supervisor, Site Specialist and QI Coordinator.*
- *We kept it simple with our PDSAs – ‘Baby Steps’.*
- *It was very helpful to have the QI experience and expertise of our Medical Director and our Breakthrough Collaborative Coach.*

What we achieved...

- *Improved rate of pneumovax with high risk patients.*
- *Established continuity with other QI projects.*
- *Create standard of care for all patients.*
- *Optimistically preventing inpatient hospitalizations due to pneumonia.*
- *Optimize MA role in patient care.*

Measured results...



Lessons learned...

- *Able to meet goal; gained confidence in our abilities to take on other QI projects.*
- *Good experience for all.*
- *Empowers MA to be valued part of patient care.*
- *Obstacle: Some patients can't afford the pneumovax. What should be done?*

Where we go from here...

Spread project to all provider/MA teams at Emeline Clinic.

Big Picture:

Our project to reduce inpatient hospitalizations has three areas of focus:

- *The first is an increased pneumovax rate.*
- *The second focus area will be implementing open access.*
- *And the third will be clinician education.*

The timeline for the entire project is two to three years.